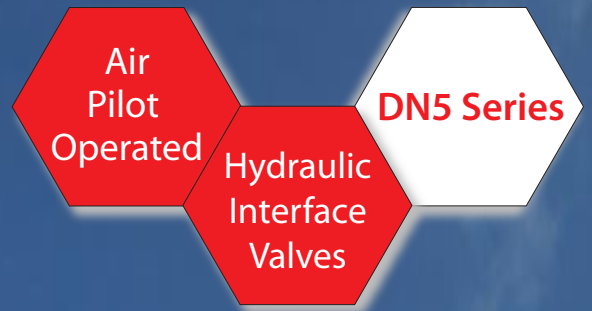


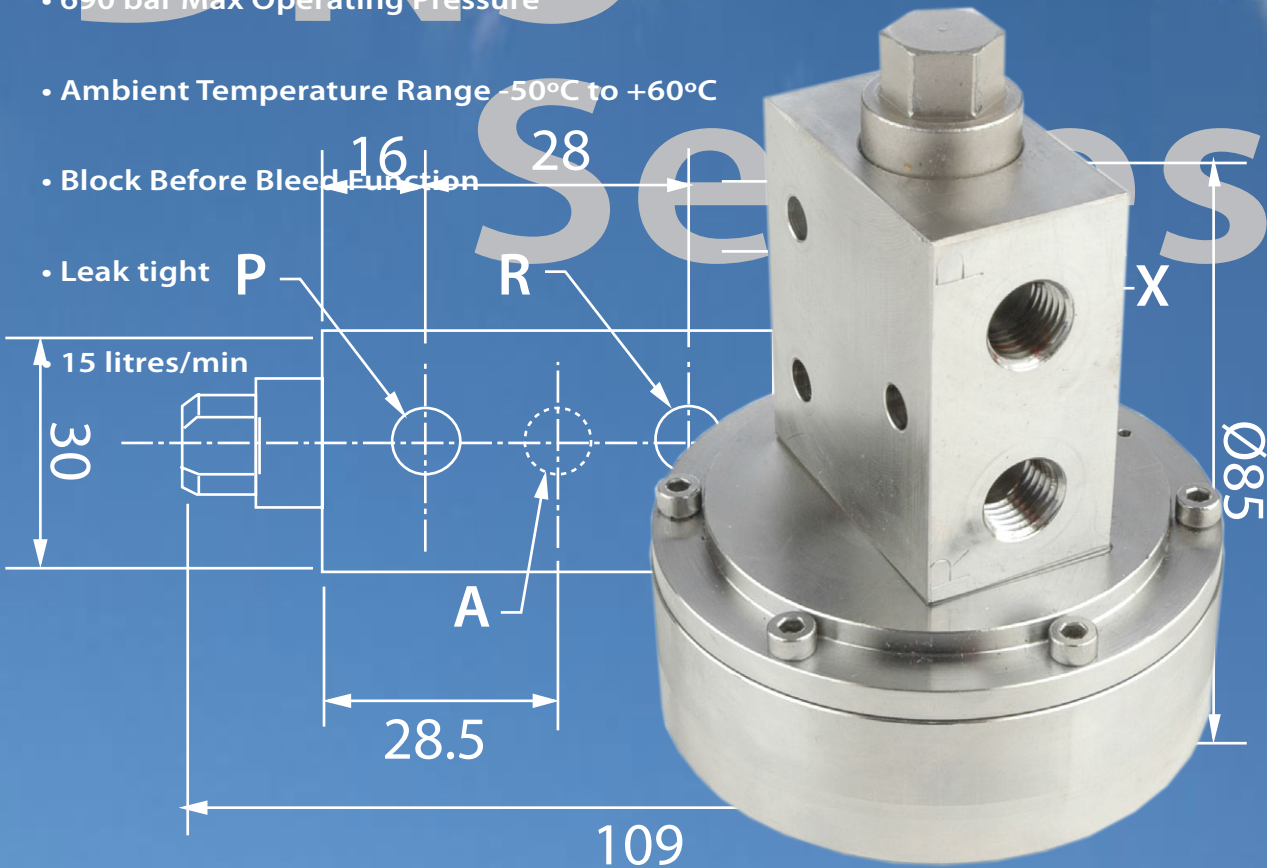
Severe & Hazardous Area Experts



- Specifically designed for Severe Offshore Environments
- ATEX 94/9/EC
- M.T.B.F., Lambda and SIL Data (Available upon request)
- Easy Installation, Repair and Replacement
- 316 Stainless Steel construction
- 3 Ports, 2 Positions, Normally Closed
- 690 bar Max Operating Pressure

DN5

- Ambient Temperature Range -50°C to +60°C
- Block Before Bleed Function
- Leak tight P



ATEX  (GOST R)

Severe & Hazardous Area Experts

Air
Pilot
Operated

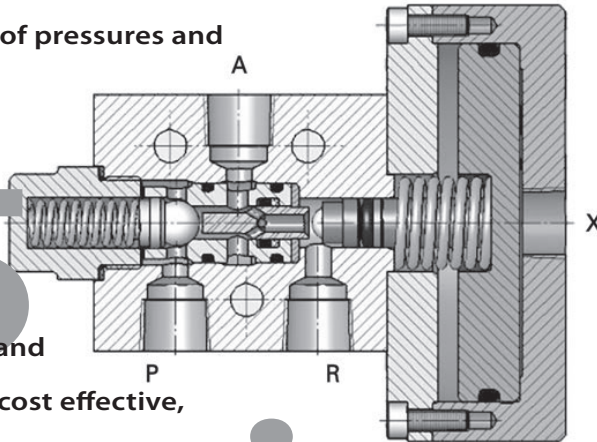
Hydraulic
Interface
Valve

DN5 Series

General Description

The DN5 High Pressure Hydraulic Interface Valve provides a reliable, high quality, cost effective solution for Wellhead Controls. The rigid piston operator and ball seated design, ensures a leak tight shut off and positive control. The DN5 Interface Valve can also be supplied with a variety of operators, for a wide range of pressures and ambient temperatures (see selection chart)

The DN5 High Pressure Hydraulic Interface Valve can be individually in-line mounted or subplate/multi-station manifold mounted with integral cartridge check, flow control, and pressure relief valves, to provide a compact, cost effective, weight and space saving solution, for multi-well panels.



Materials of construction

- 316L Stainless Steel body
- Wetted parts : stainless steel
- Seals: Rubber (viton/PTFE)

Ports NPT

- Hydraulic Port Connections ¼" NPTF
- Air Pilot Port Connection ¼" NPTF

Nominal Flow Rate

- 15 LPM @ 10 bar DP
- Cv = 0.33

Filtration

- Recommended 10 micron absolute

Ingress protection

- IP66/NEMA 4X

Ambient temperature range

- Standard: -20°C to +60°C
- Low Temp: -50°C to +60°C

Maximum operating pressure

- 690 bar (10,000 psi)

Maximum Air Pilot Pressure

- 12 bar (174 psi)

Minimum Air Pilot Pressure

- 2.0 bar (44 psi)

Fluid Media

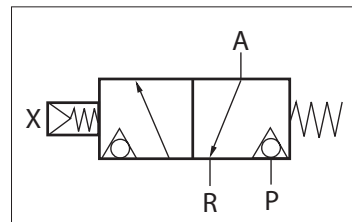
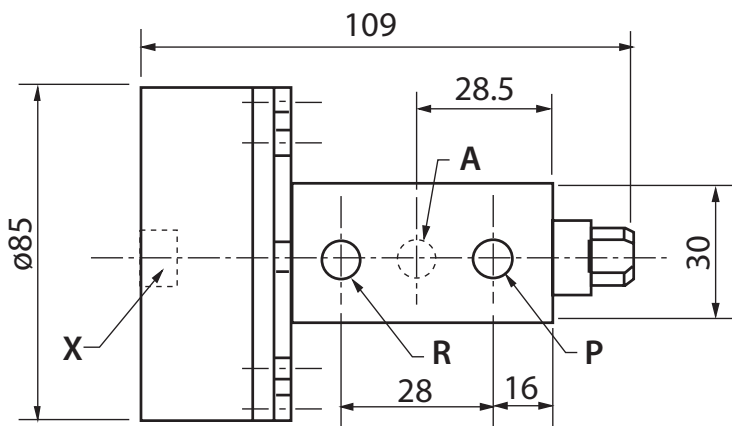
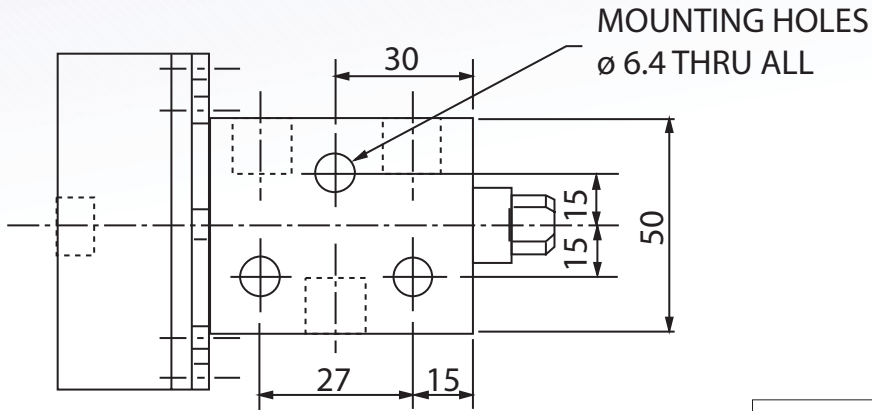
- Suitable for use with Mineral Oil, Synthetic Oil, and Water Glycol Fluids



ATEX

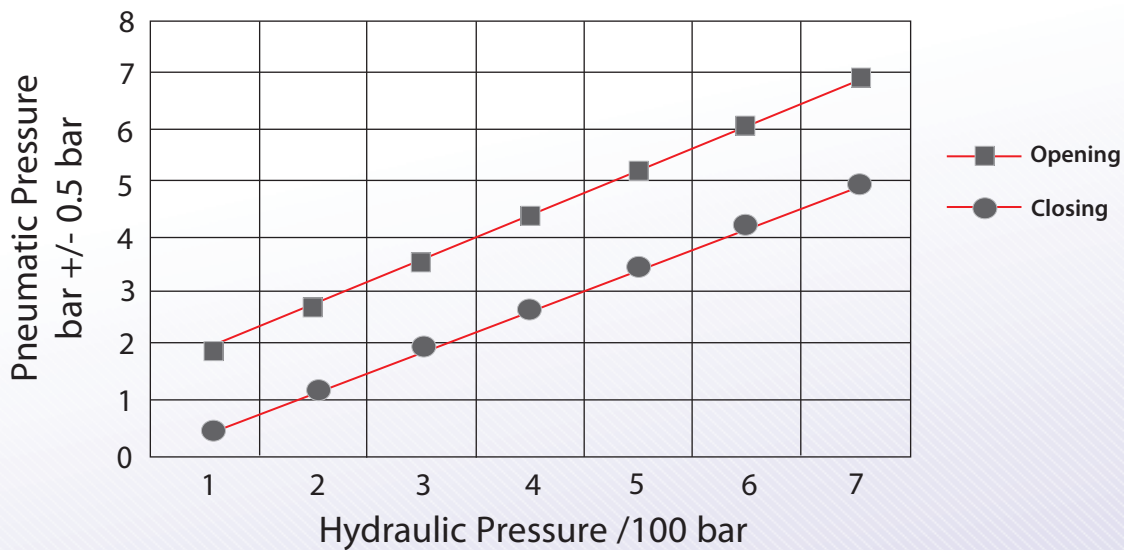
Severe & Hazardous Area Experts

Air Pilot Operated
Hydraulic Interface Valve
DN5 Series



All Ports 1/4" NPT

Operating pressure for Interface valve



Midland- ACS Valve Coding System 2007

